



NLS
FINNISH GEOSPATIAL
RESEARCH INSTITUTE
FGI

AGILE workshop on the Current trends of Volunteered Geographic Information in National Mapping and Cadastral Agencies
(Organised by EuroSDR)

Examples of using VGI in NMCA's

Projects and initiatives from Finland

Prof Juha Oksanen

Dr Pyry Kettunen (DSc Tech)

Finnish Geospatial Research Institute FGI, Geoinformatics and Cartography

National Land Survey of Finland

Contents

Before 2018

- Karttakerttu – Map Gretel

2018-2020

- Osoitehaavi – Address Hand Net

2021-2022

- Pyykkijahti – Marker Quest

NLS Feedback tool

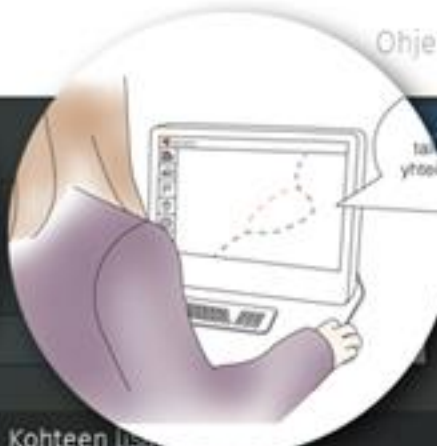
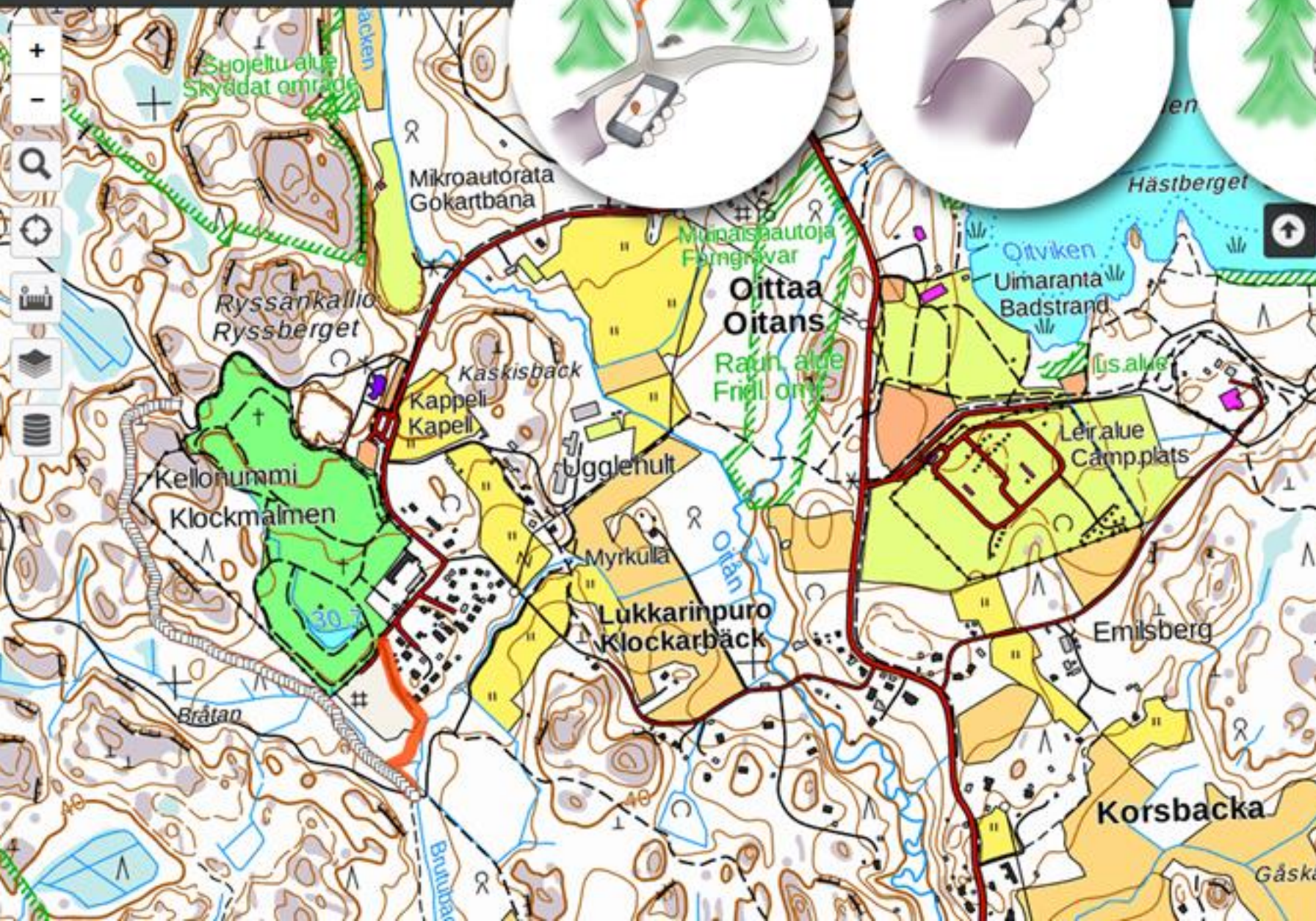
Lessons learnt



Karttakerttu Map Gretel



- Objective:
 - Updating NLS FI's Topographic Database by using VGI
- Pilot focused on features poorly visible in stereo models, mostly paths, but also barriers, boat launching sites etc.
- Pilot version built on the top of open source uMap
- Nearly 400 users, >1000 updated features
- The Pilot phase was considered as a success story
 - Despite the success, other projects were prioritised for further funding
- More information:
 - Rönneberg, M., Laakso, M. & Sarjakoski, T. Map Gretel: social map service supporting a national mapping agency in data collection. J Geogr Syst 21, 43–59 (2019).
<https://doi.org/10.1007/s10109-018-0288-z>



Reitin päällyste
päälystämätön

Valaistus
kyllä ei ei tietoa

Kulkee osittain tai kokonaan jään päällä
kyllä ei ei tietoa

Koiran ulkoiluttaminen sallittu
kyllä ei ei tietoa

Tallennustapa
Tiedosto

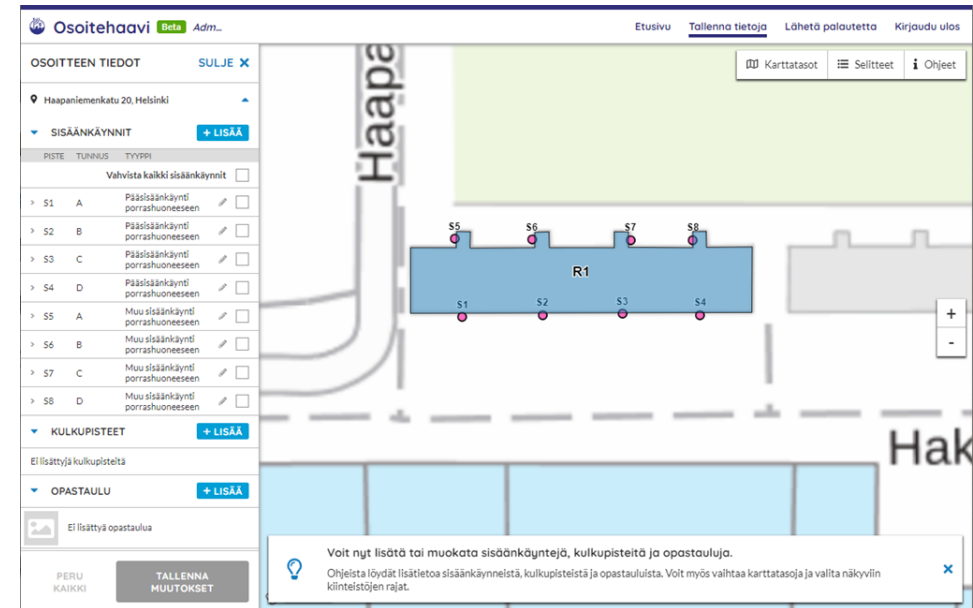
nimi
Move

kuvaus ?

Osoitehaavi "Address Hand Net"

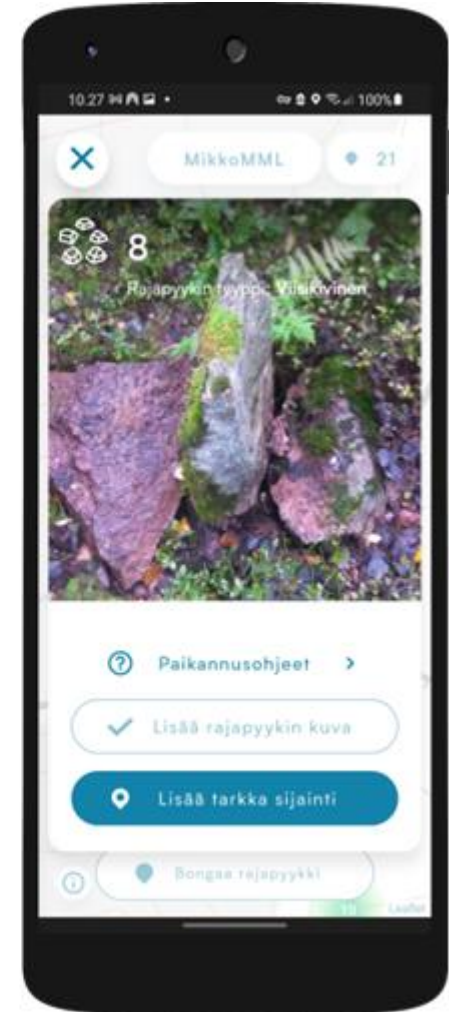
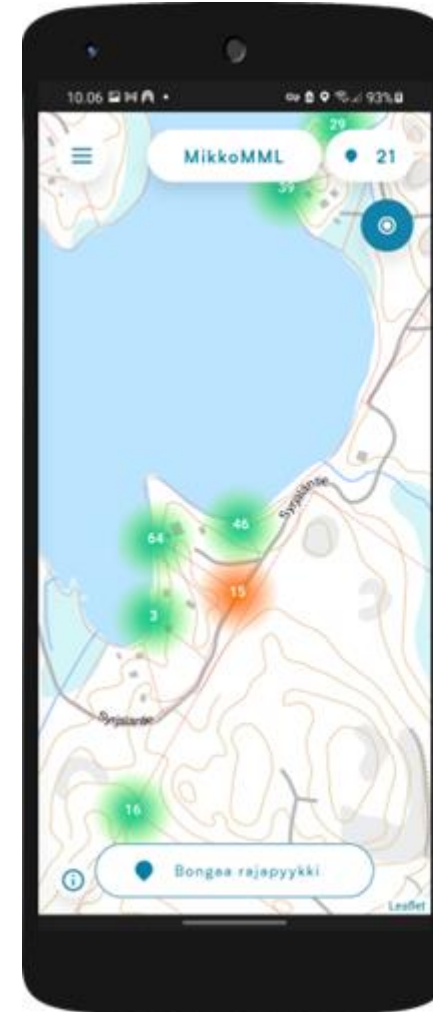


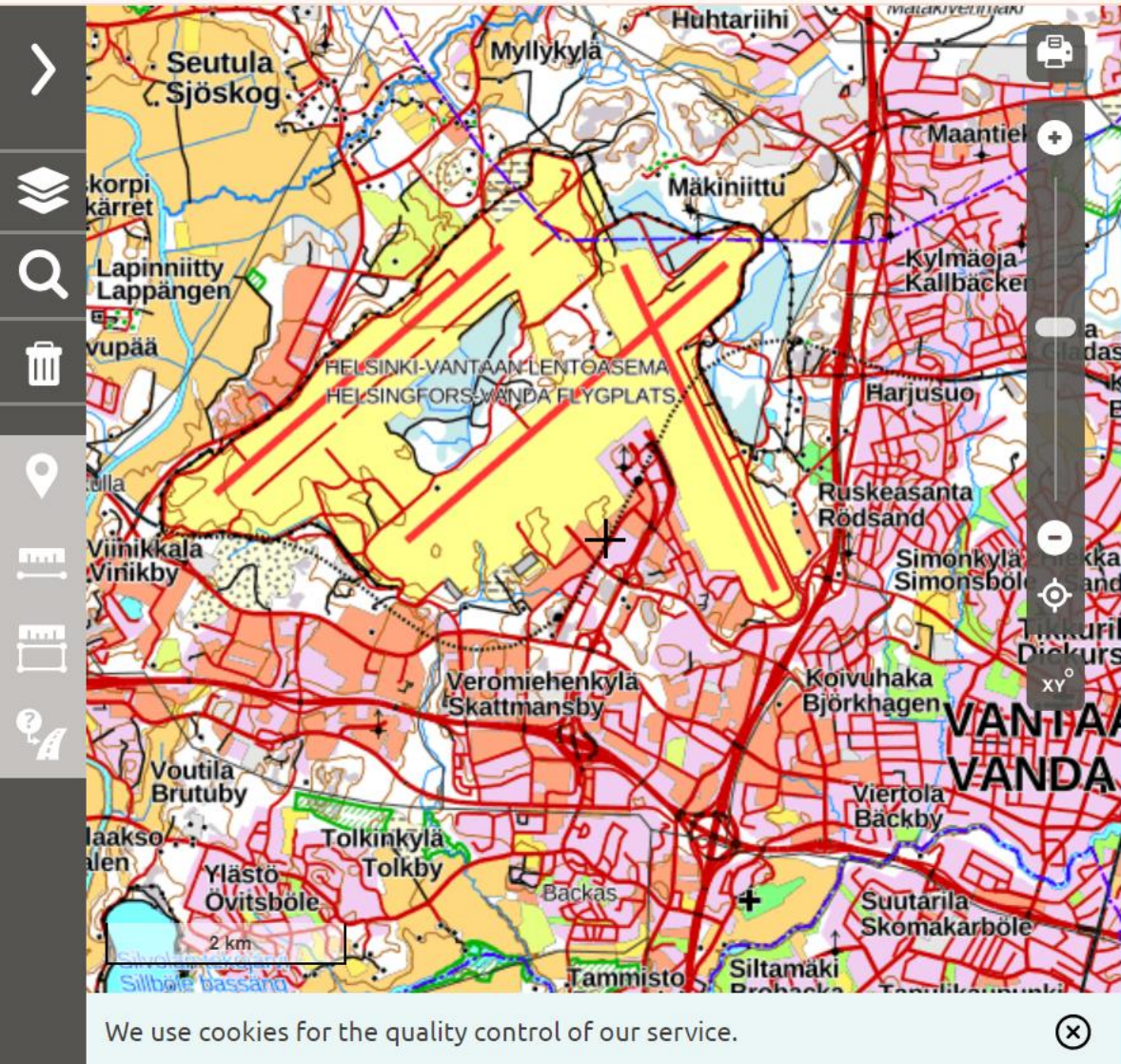
- Objective:
 - Creation of National Address Database, where VGI is used for collecting information on the location and characteristics of building entrances and wayfinding access points
- Lempäälä pilot 2019
 - 189 new entrances added
 - 67 new waypoint added
- Project found extremely important
 - Despite the importance, other projects were prioritised for further funding



Pyykkijahti Marker Quest

- Objective:
 - Improvement of the positional accuracy of benchmarks in the NLS FI Cadaster by using crowdsourcing and gamification
- Pilot 2019
 - More than 3900 users
 - More than 20000 measured points
- Pyry will tell more...





National Land Survey - MapSite

Frontpage FI / SV / EN

Feedback about map data

Show the feature on the map that your feedback is about.
Required fields are marked with an asterisk (*).

Coordinates *

Click on the map

Heading *

Description *

Contact information

Enter your contact information, if your feedback concerns a place name or if you wish us to contact you.

Lessons learnt

- Crowdsourcing appears to provide significant contribution to the duties of NMCA's, including maintenance of topographic data, cadaster etc.
- For unknown reason, the pilots have not grown into operational services
 - Real reasons would deserve deeper analysis
- At the moment, the Feedback tool is the only operational service
- Funding setting appears to be a challenge
 - Do we need better argued justifications for running VGI projects in NMCA's?

Knowing the Earth – Securing the future

