



*Beeldmateriaal*  
Nederland

*Actueel Hoogtebestand*  
Nederland

# Future Mapping Strategies

---

January 30th 2025



# Stereo mapping



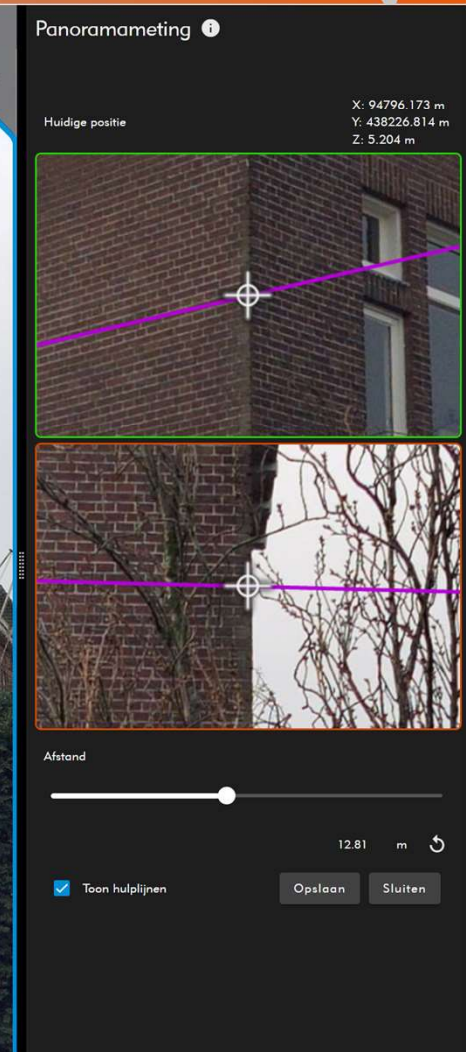
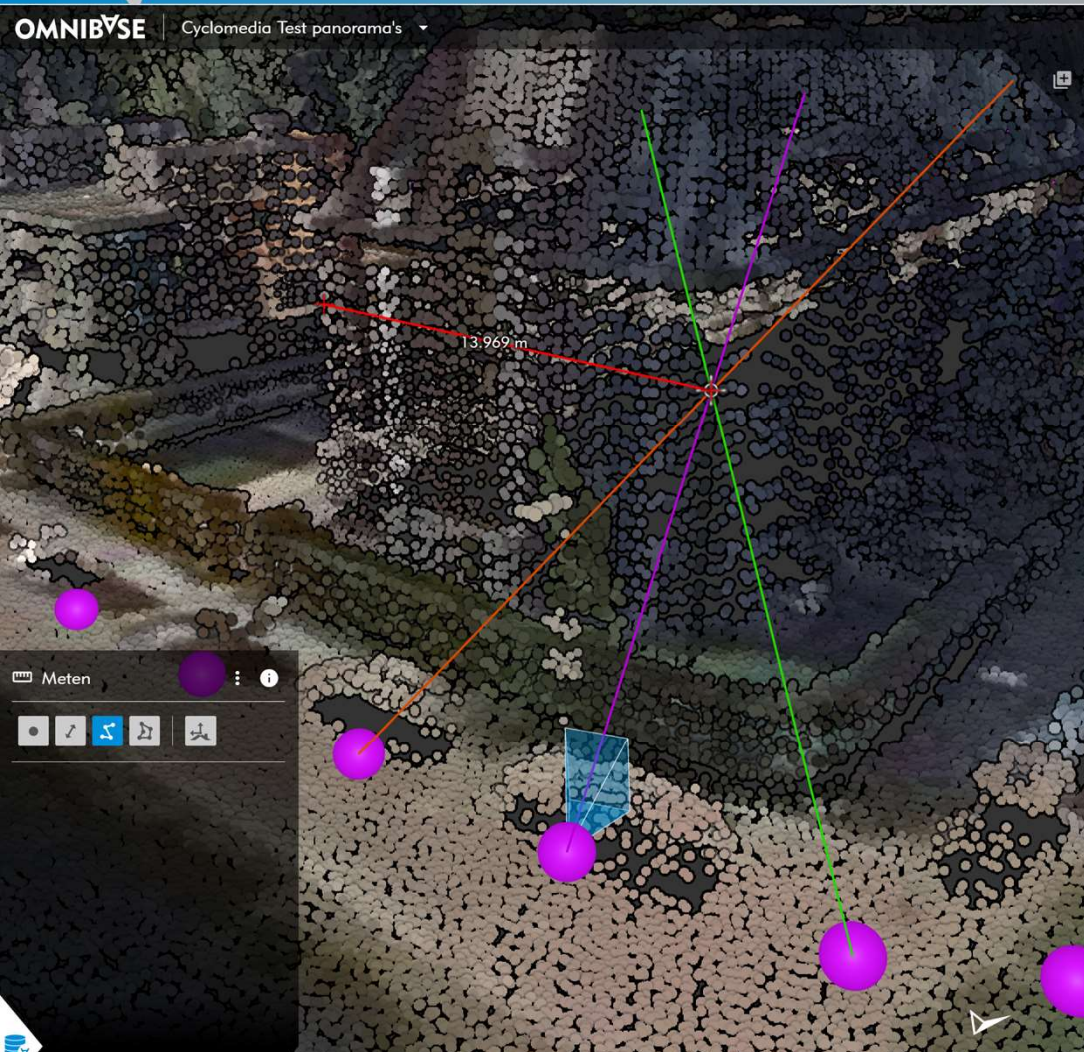


# True orthophoto

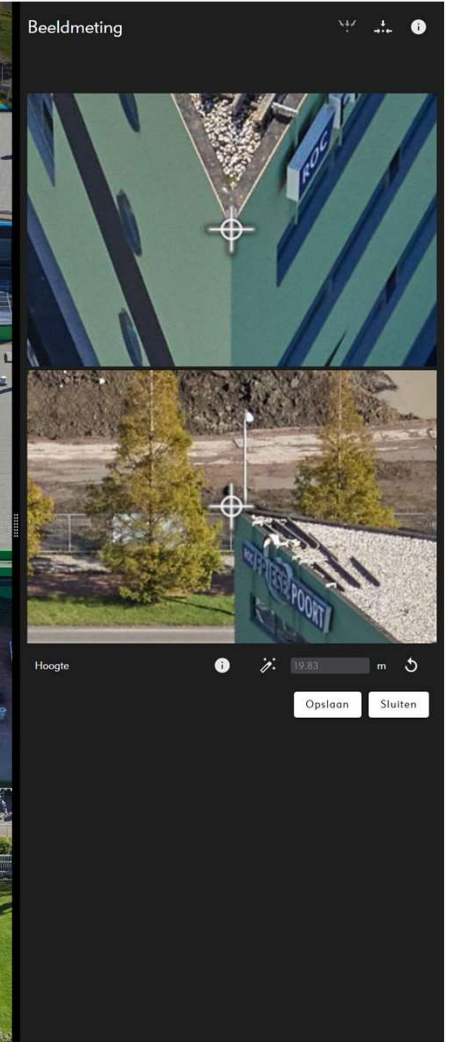
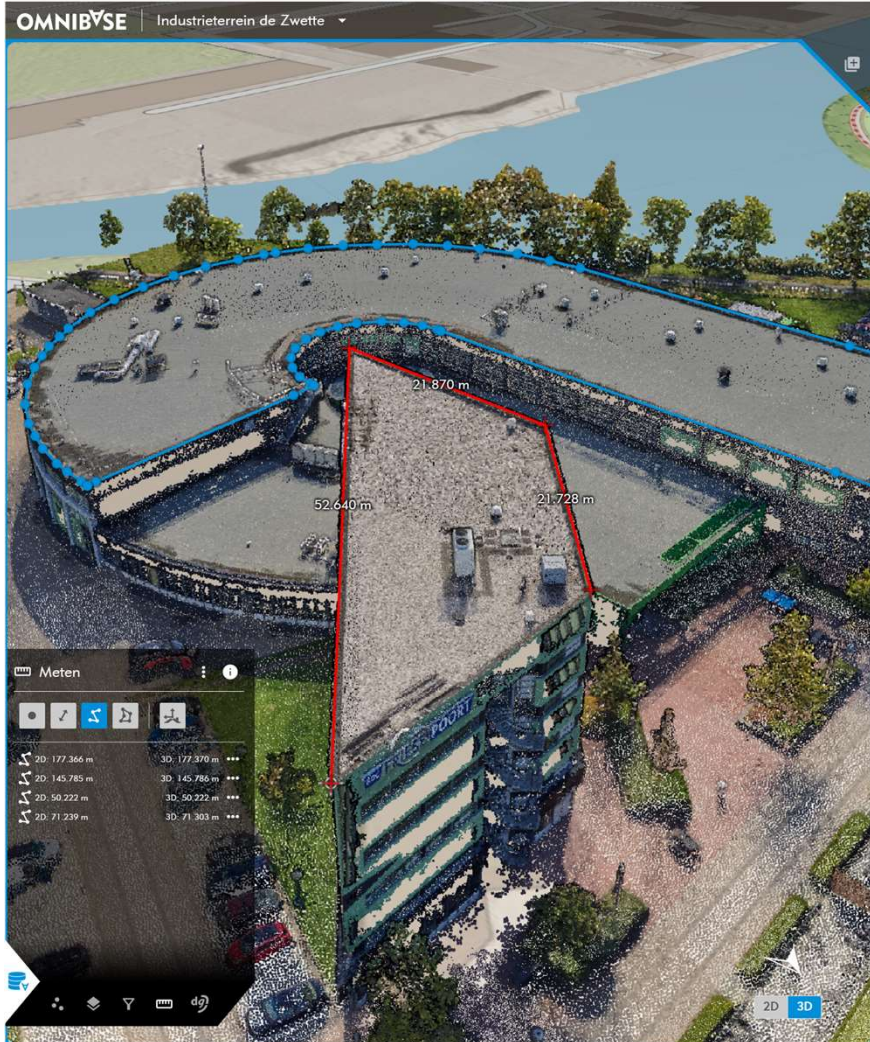




# Oblique imagery



# Oblique imagery





# Discussion



---

- Do we still maintain our national maps using stereomapping in a few years from now?
- If not, what would be the best product portfolio for national mapping agencies?