

Introduction to UN-GGIM Framework for Effective Land Administration (FELA)

International Workshop on Challenges in relation to the UN-GGIM
Framework for Effective Land Administration (FELA)

16th – 17th June 2025, Paris, France

Presentation is based on documents and presentations from UN-GGIM and EuroSDR

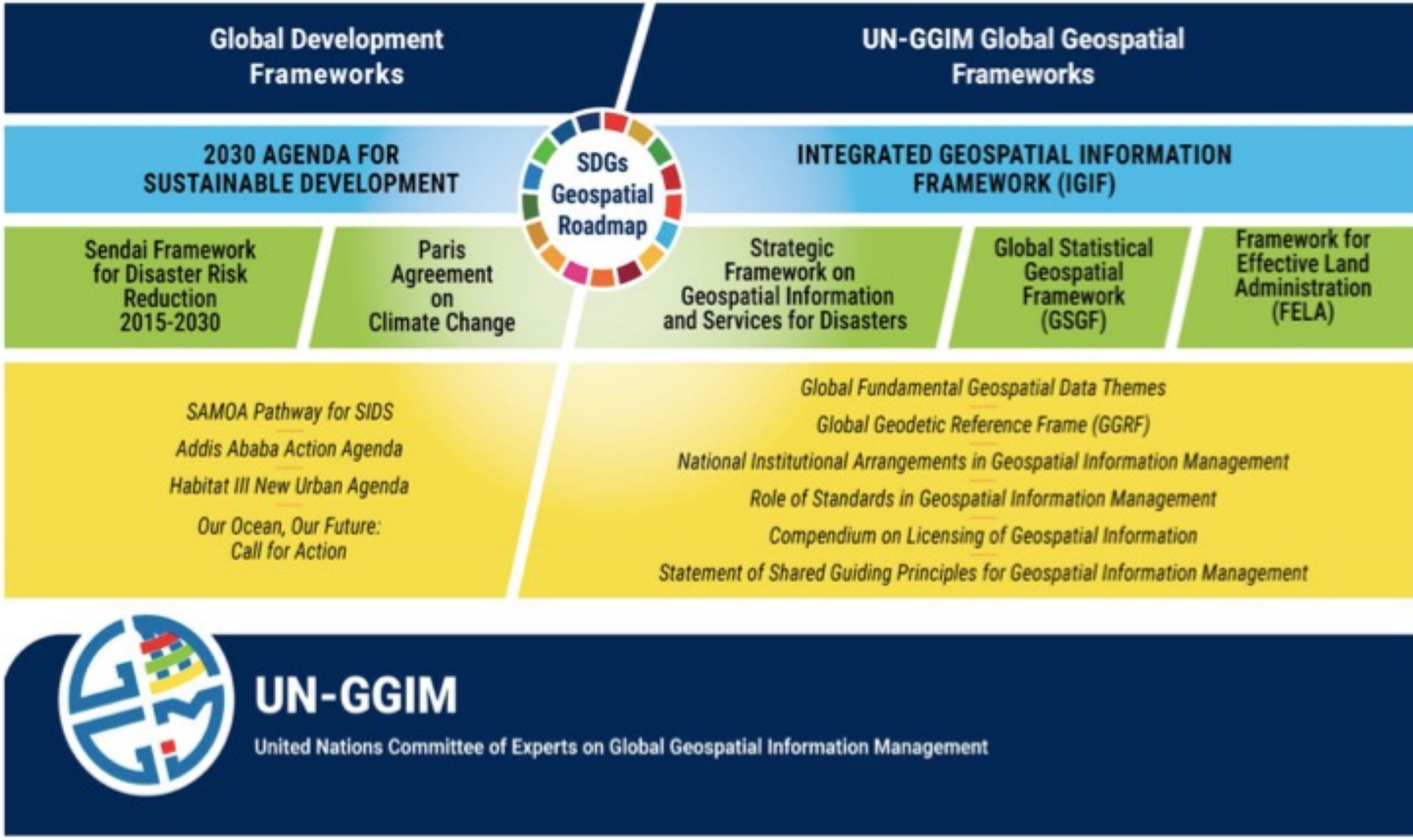
<https://ggim.un.org>; <http://www.eurosd.net>



Presented by: Eva-Maria Morscher-Unger, Kadaster, the Netherlands

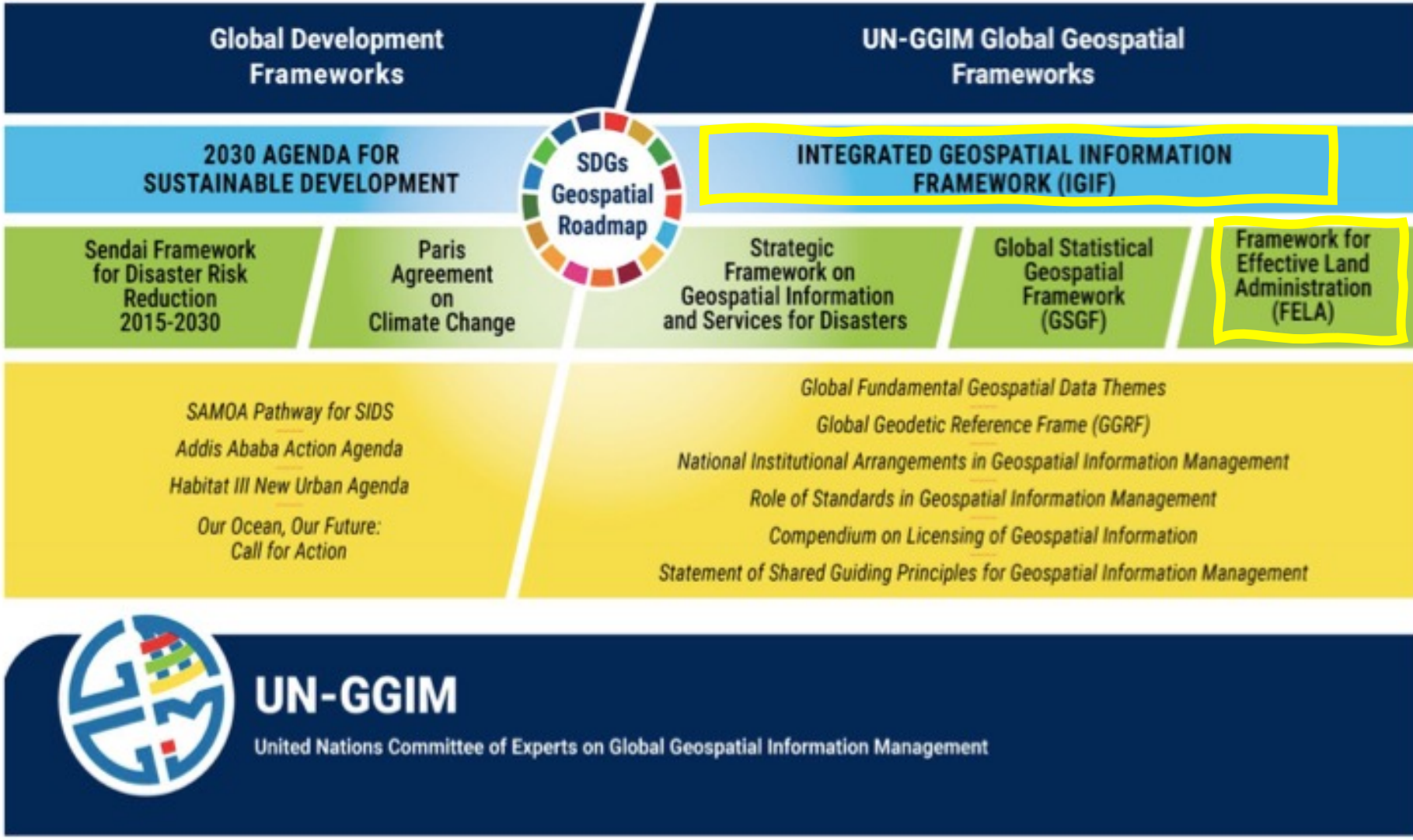


The Committee of Experts transmitted to ECOSOC its report, pursuant to resolution [E/RES/2016/27](#) entitled 'Enhancing global geospatial information management' ([E/2022/68](#)) in June 2022. The comprehensive report described the process of 'transition' marking the Committee's work, starting with an initial five-year period (2011 – 2016) on **initiated/establishment**; the report then detailed its second five-year period (2017-2021) on **institutionalization**; and then considers the Committee's future in the coming five-year period – **on implementation of the Committee's frameworks, anchored by the UN-IGIF.**



Source: https://ggim.un.org/meetings/2025/Maputo/documents/I-1.1_UN-GGIM_Mandates.pdf by Guillaume Le Sourd

The Committee of Experts transmitted to ECOSOC its report, pursuant to resolution [E/RES/2016/27](#) entitled 'Enhancing global geospatial information management' ([E/2022/68](#)) in June 2022. The comprehensive report described the process of 'transition' marking the Committee's work, starting with an initial five-year period (2011 – 2016) on **initiated/establishment**; the report then detailed its second five-year period (2017-2021) on **institutionalization**; and then considers the Committee's future in the coming five-year period – **on implementation of the Committee's frameworks, anchored by the UN-IGIF.**

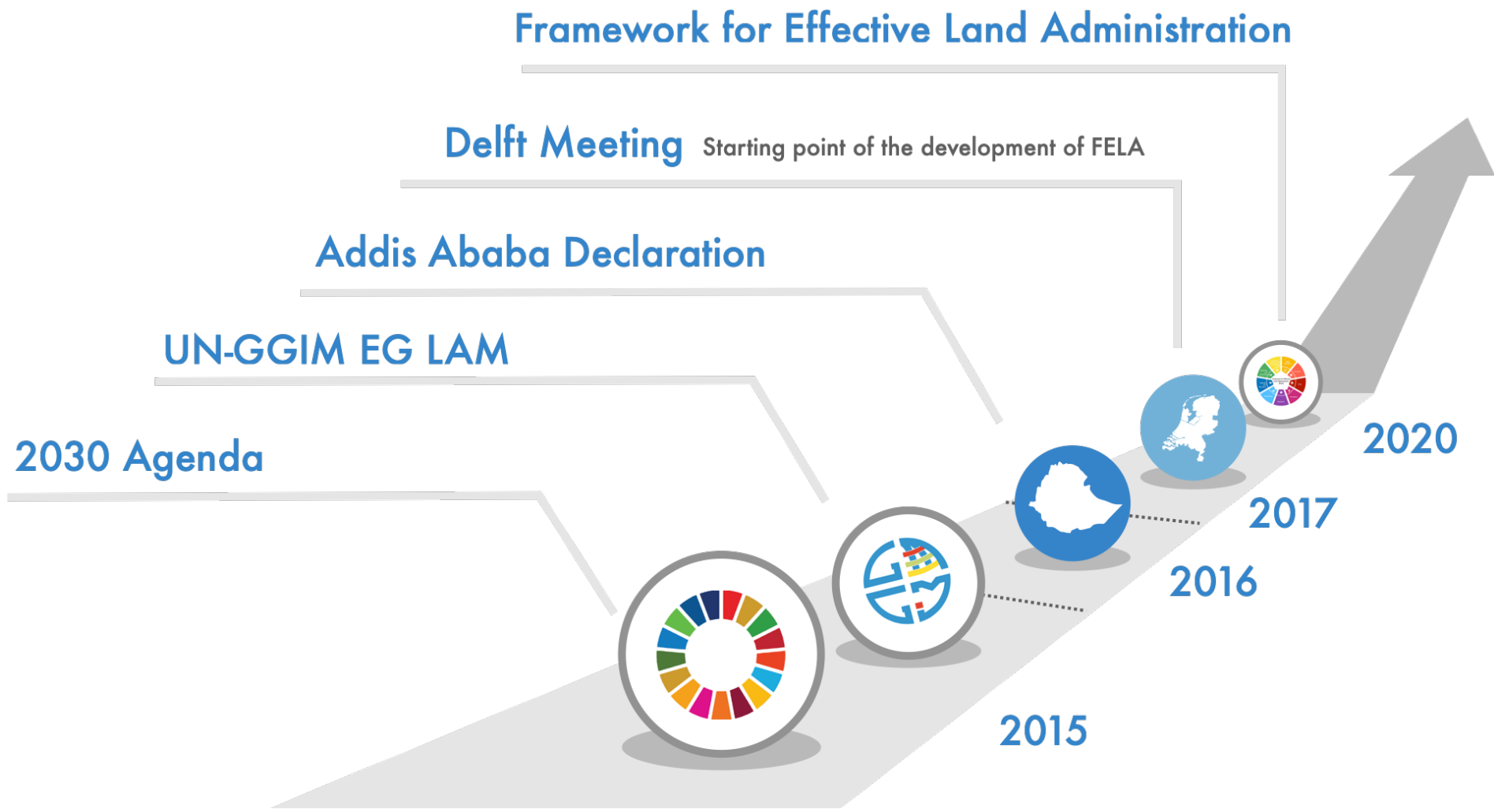


Source: https://ggim.un.org/meetings/2025/Maputo/documents/I-1.1_UN-GGIM_Mandates.pdf by Guillaume Le Sourd



The Framework for Effective Land Administration

Sustainable development demands effective land administration





The Framework for Effective Land Administration

Sustainable development demands effective land administration

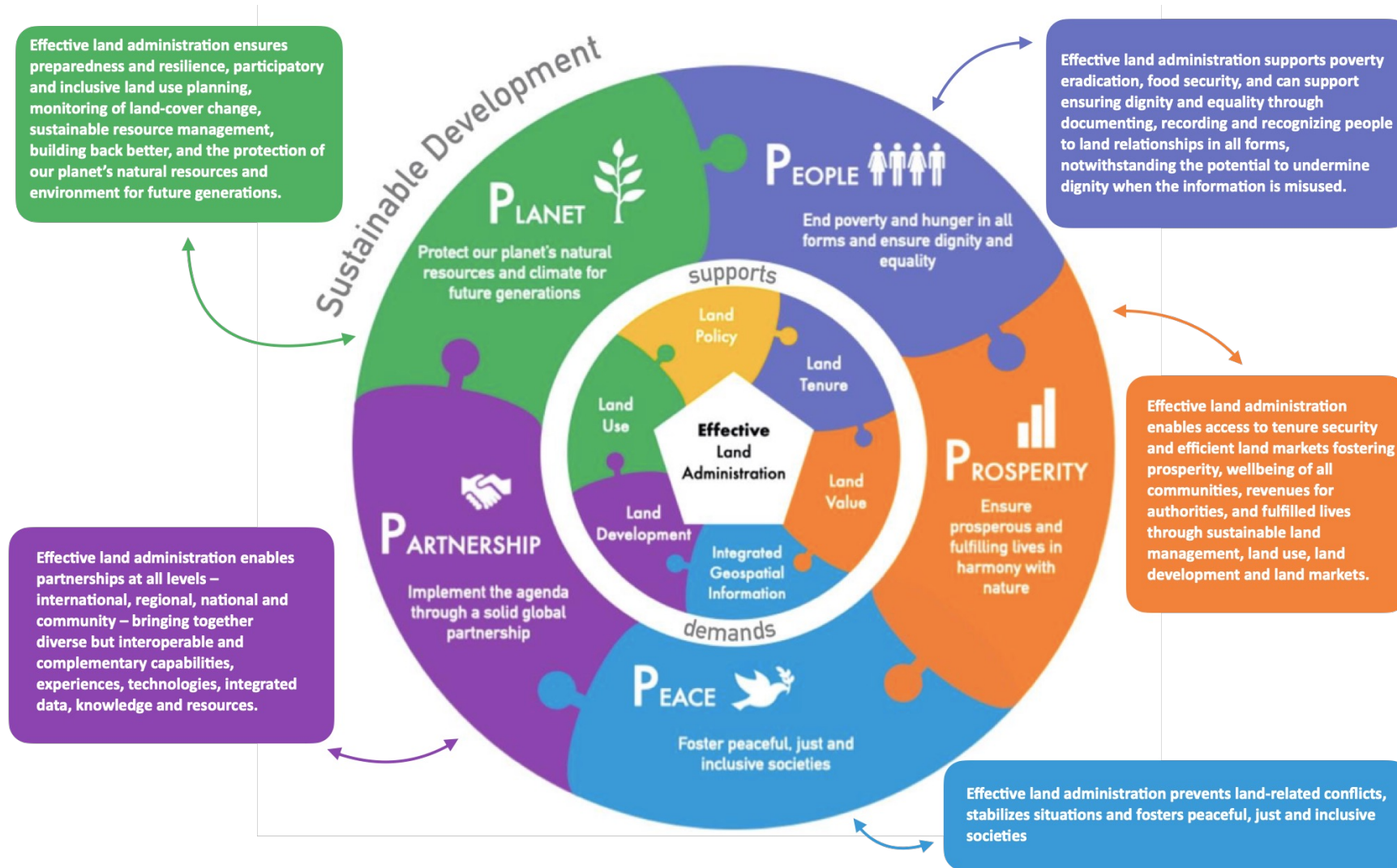


Figure: FELA in relation to the 5Ps, adapted from (UN-GGIM, 2020) by Unger, E.M.



The Framework for Effective Land Administration

Sustainable development demands effective land administration

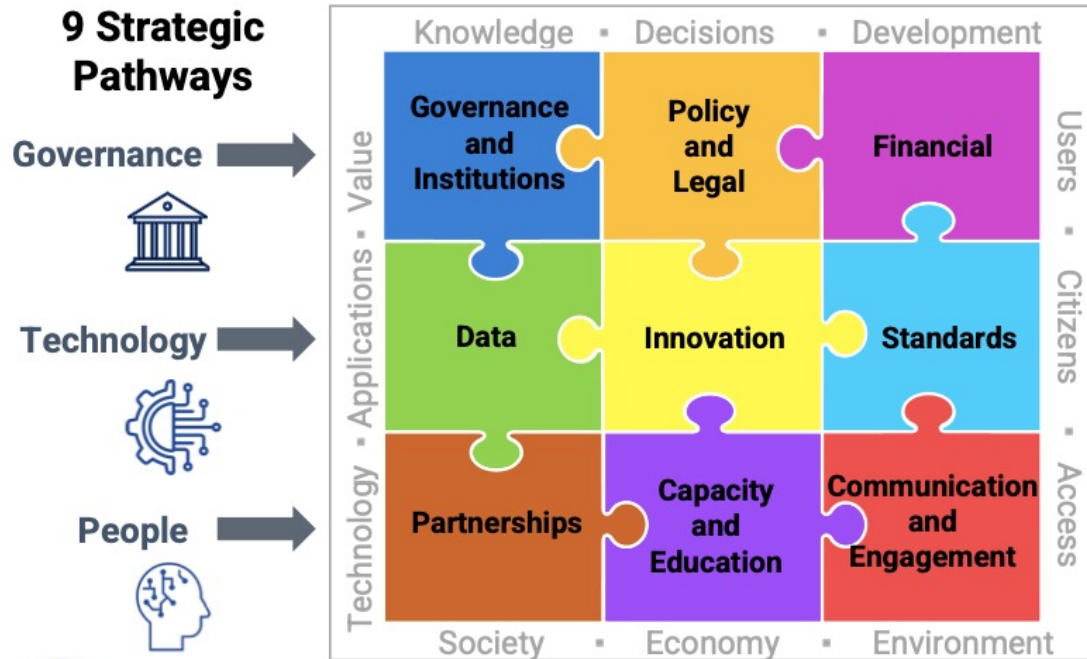
Effective land administration caters to all people, and must:

- 💡 Develop confidence and *trust*, promote *security, safety, peace* and *peace building*;
- 💡 Accelerate the proportion of population with *tenure security*;
- 💡 Allow *economic development* by supporting land value capture revenue systems that are equitable and transparent;
- 💡 Strengthen *multi-disciplinary* and *multi-sectoral participation* to achieve integrated geospatial information;
- 💡 Contribute to *smart* and *resilient rural* and *urban societies*, with equitable spatial/land use planning, and land development;
- 💡 Ensure *participatory* and *inclusive* land use, and land use planning;
- 💡 Promote the recognition of the *inherent rights of indigenous and vulnerable peoples* to their lands, territories and resources, and *recognise collective traditions, customs and customary tenures*, consistent with existing obligations under national and international law;
- 💡 Encourage *efficient, sustainable and fair land markets*, where appropriate, that take into account land tenure, value, use and land development aspects;
- 💡 Cater to *all* circumstances, situations and people – in times of *peace and prosperity*, in times of *stress and hardship* (including disaster and conflicts, forced migration and human displacement, poverty, food and water scarcity);
- 💡 Enable *partnership, bringing and building together knowledge, skills and experiences* on land tenure, land value, land use and land development; and
- 💡 Promote *preparedness and resilience* on climate change issues and support biodiversity, conservation and ecosystem sustainability.



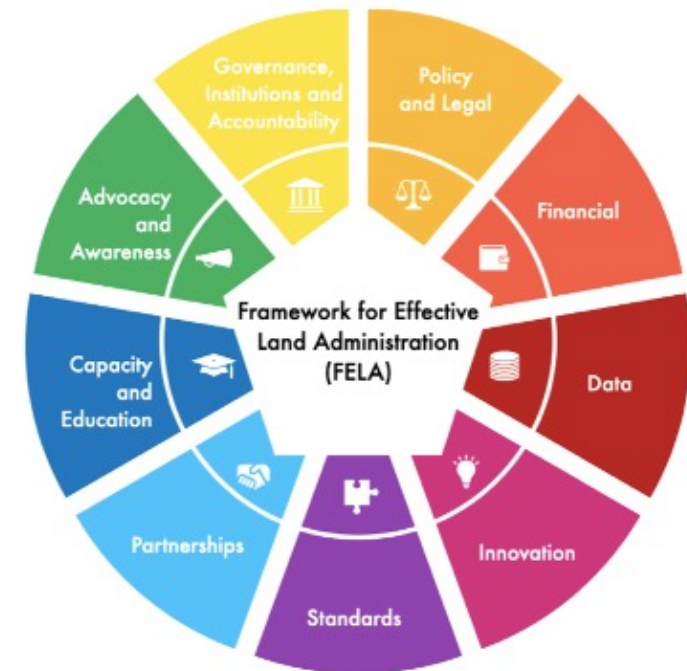
Figure: Effective Land Administration, adapted from (UN-GGIM, 2020) by Unger, E.M.

Integrated Geospatial Information Framework



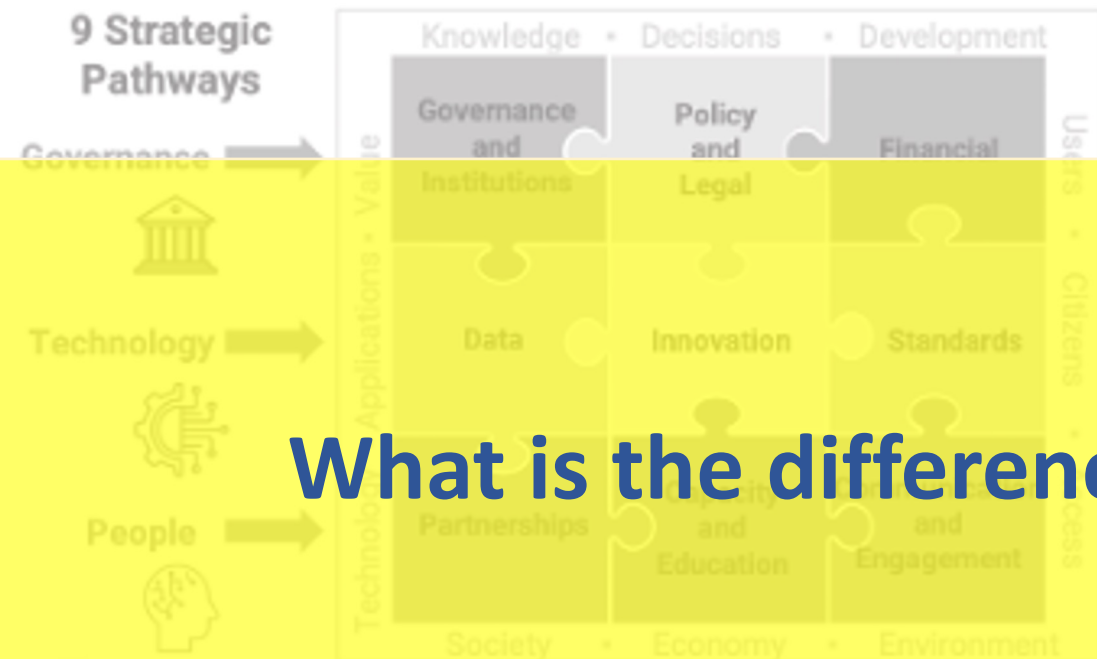
- Overarching Framework adopted at 8th Session (2018)
- Implementation Guide 2020 adopted at 10th Session
- 9 Strategic Pathways
- 36 Key Elements
- [IGIF](#)

Framework for Effective Land Administration



- Adopted at 10th Session (2020)
- No Implementation Guide
- 9 Pathways - FELA is fully aligned with the IGIF*
- *I: Accountability; IX: Advocacy and Awareness
- **FELA implements the IGIF for the land sector**
- [FELA](#)

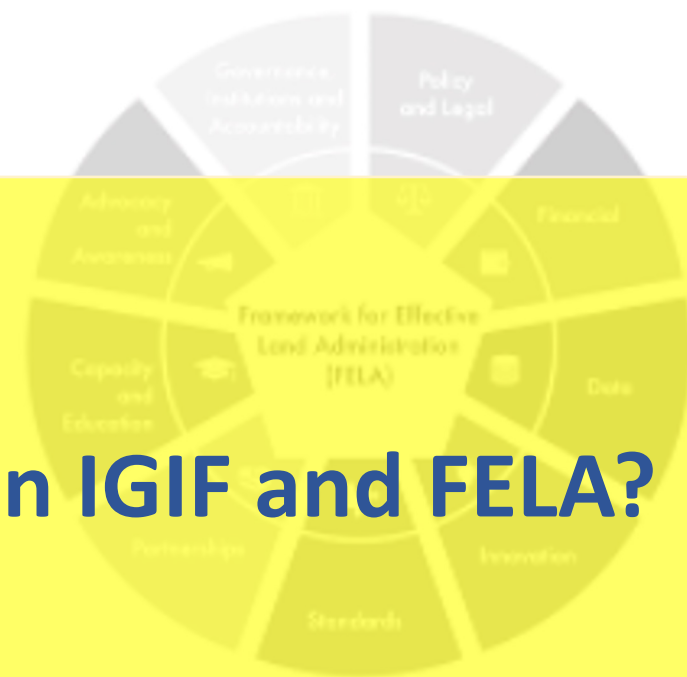
Integrated Geospatial Information Framework



What is the difference between IGIF and FELA?

- Overarching Framework adopted at 8th Session (2018)
- Implementation Guide 2020 adopted at 10th Session
- 9 Strategic Pathways
- 36 Key Elements
- IGIF

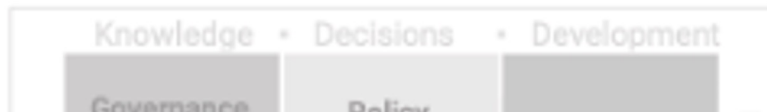
Framework for Effective Land Administration



- Adopted at 10th Session (2020)
- No Implementation Guide
- 9 Pathways - FELA is fully aligned with the IGIF*
*I: Accountability; IX: Advocacy and Awareness
- FELA implements the IGIF for the land sector
- FELA

Integrated Geospatial Information Framework

9 Strategic Pathways



Framework for Effective Land Administration



IGIF is an umbrella framework and when you work with the IGIF and entering the domain of land administration you can work with the FELA because it is all part of the puzzle.

When implementing the IGIF at the country-level FELA is preferred when we have to address land and property rights, as FELA references land related guidelines/publications and standards.

- 36 Key Elements

- IGIF

- *I: Accountability; IX: Advocacy and Awareness
- FELA implements the IGIF for the land sector

- FELA

Integrated Geospatial Information Framework



Why is IGIF successful and FELA almost forgotten?

- Overarching Framework adopted at 8th Session (2018)
- Implementation Guide 2020 adopted at 10th Session
- 9 Strategic Pathways
- 36 Key Elements
- IGIF

Framework for Effective Land Administration



- Adopted at 10th Session (2020)
- No Implementation Guide
- 9 Pathways - FELA is fully aligned with the IGIF*
- *I: Accountability; IX: Advocacy and Awareness
- FELA implements the IGIF for the land sector
- FELA

Integrated Geospatial Information Framework



How can FELA be further leveraged to address today's challenges?

How can it add value in today's geospatial and LA landscape?

- Overarching Framework adopted at 8th Session (2018)
- Implementation Guide 2020 adopted at 10th Session
- 9 Strategic Pathways
- 36 Key Elements
- IGIF

Framework for Effective Land Administration



- Adopted at 10th Session (2020)
- No Implementation Guide
- 9 Pathways - FELA is fully aligned with the IGIF*
- *I: Accountability; IX: Advocacy and Awareness
- FELA implements the IGIF for the land sector
- FELA



The Framework for Effective Land Administration

Sustainable development demands effective land administration

Current Gaps and Challenges of FELA

- Overlap with IGIF and lack of clear differentiation
- Limited awareness among stakeholders and practitioners – **what** can you actually do with it
- Absence of implementation tools and country level guidance – would that be needed or too much duplication of IGIF? – or better to ask what is missing in IGIF specifically for **Land**
- Insufficient alignment with donor strategies and funding priorities – though WB/FAO etc. were included
- Update needed? Tech, AI, map production, marine, space

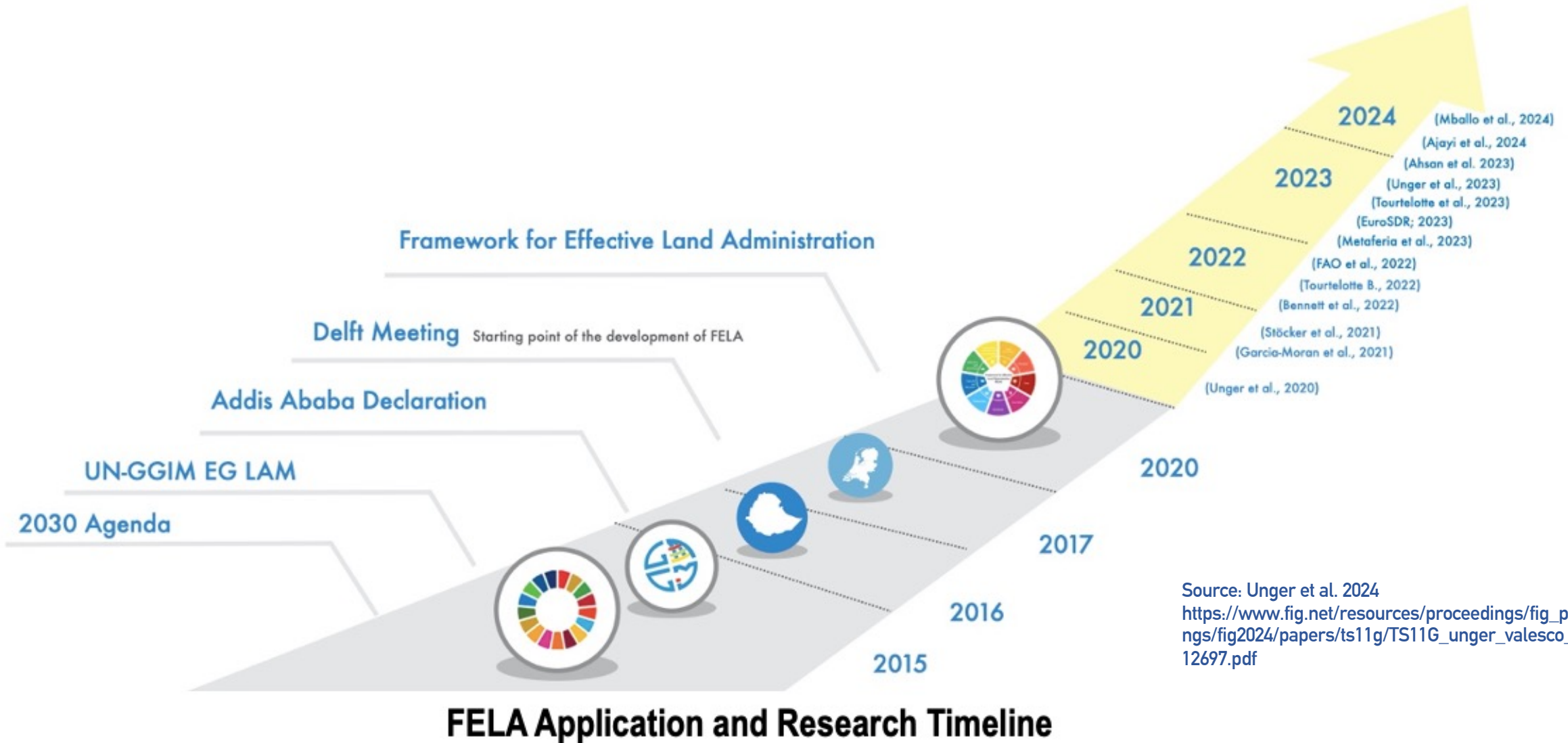
Unique Value Proposition

- It is an adopted UN Framework
- FELA provides a policy level perspective on institutional coordination etc. Unlike more technical or thematic frameworks
- FELA focuses on institutional effectiveness and strategic alignment
- FELA promotes and links to other policies, guidelines etc.



The Framework for Effective Land Administration

Sustainable development demands effective land administration



Source: Unger et al. 2024
https://www.fig.net/resources/proceedings/fig_proceedings/fig2024/papers/ts11g/TS11G_unger_valesco_et_al_12697.pdf

Articles and papers

Land Administration Domain Model (LADM)

Framework for Effective Land Administration (FELA)

concerning Cadaster and land administration.



Framework for Effective Land Administration

Find articles, research papers and documents on the application of the Framework for Effective Land Administration (FELA). The United Nations uses the FELA as a policy guide for UN member states.

31 documents matched your search query.

[Land 2024, 13, 528 - Navigating the Terrain of Digital Transition: Ghana's Journey of Developing a Digital Land Information System](#)

Author: Rosemond Owusu Ansah, Zaid Abubakari, Benjamin Quaye, Dimo Todorovski, Chipofya Malumbo, Christiaan Lemmen (2024)

[Marco para la Administración Efectiva del Territorio Referencia para desarrollar, reformar, renovar, fortalecer, modernizar y monitorear la administración del territorio](#)

Author: UNGGIM (2020)

[Leveraging FELA Sharing examples from the Netherlands](#)

Author: Paula Dijkstra (2022)

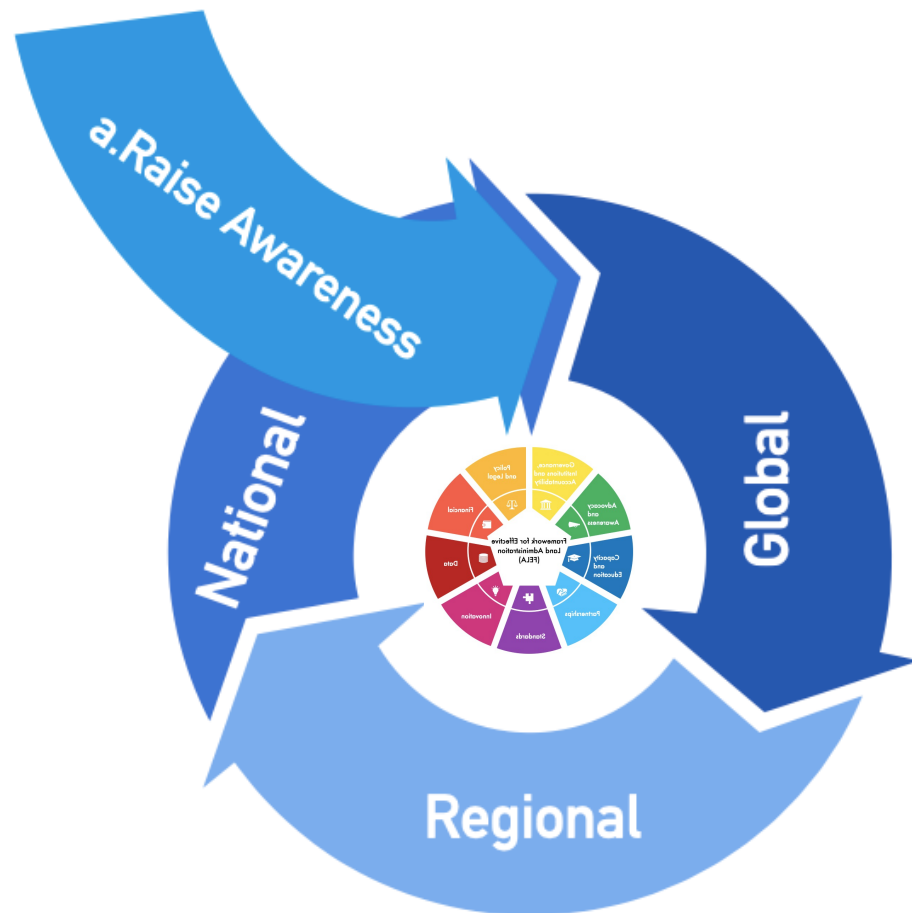
Implementing the Framework for Effective Land Administration



- a. Raise awareness and promote the usefulness of the FELA;
- b. Develop guidance to implement the FELA utilising the IGIF Implementation Guide;
- c. Develop an assessment mechanism to support the implementation of the FELA;
- d. Share and exchange knowledge, information, use cases, practices, experiences and examples; and
- e. Engage and collaborate with regional committees, in particular, UN-GGIM: Africa

Source: Unger et al. (2022) https://www.fig.net/resources/proceedings/fig_proceedings/fig2022/ppt/ts02a/TS02A_unger_crompvoets_et_al_11446_ppt.pdf

Implementing the Framework for Effective Land Administration



Source: Unger et al. (2022)
https://www.fig.net/resources/proceedings/fig_proceedings/fig2022/ppt/ts02a/TS02A_unger_crompvoets_et_al_11446_ppt.pdf

Global

- Collate and disseminate examples, use cases, good practices
- Organise international seminars, forums and workshops etc.

Regional

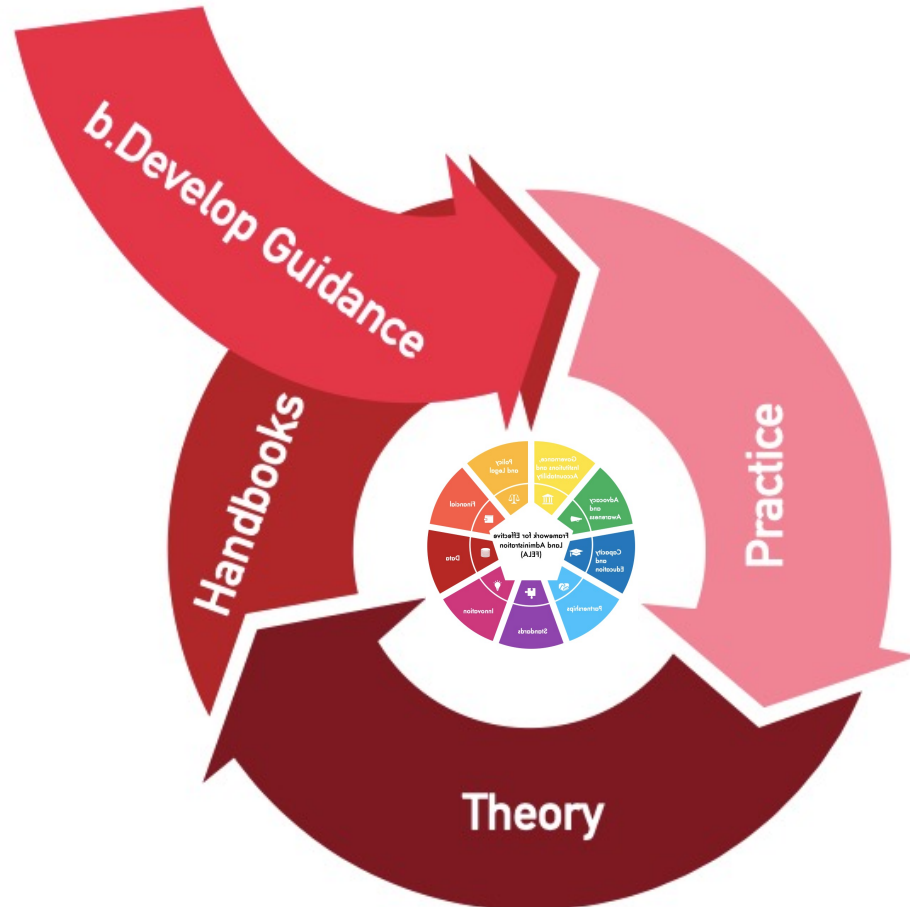
- Engage regional committees of UN-GGIM
- Contribute to regional and sub-regional engagement and activities

National

- Get FELA onto agenda of donor projects
- Dialogue through projects with other countries
- Get 'buy in' from policy-makers and practitioners



Implementing the Framework for Effective Land Administration



Practice

- Online platform with FELA as overarching framework
- Direct links to existing and globally recognized tools
- Provide forum for practitioners



Theory

- Involve academic and research institutions
- Engage with other relevant domains (environmental etc.)



Handbooks

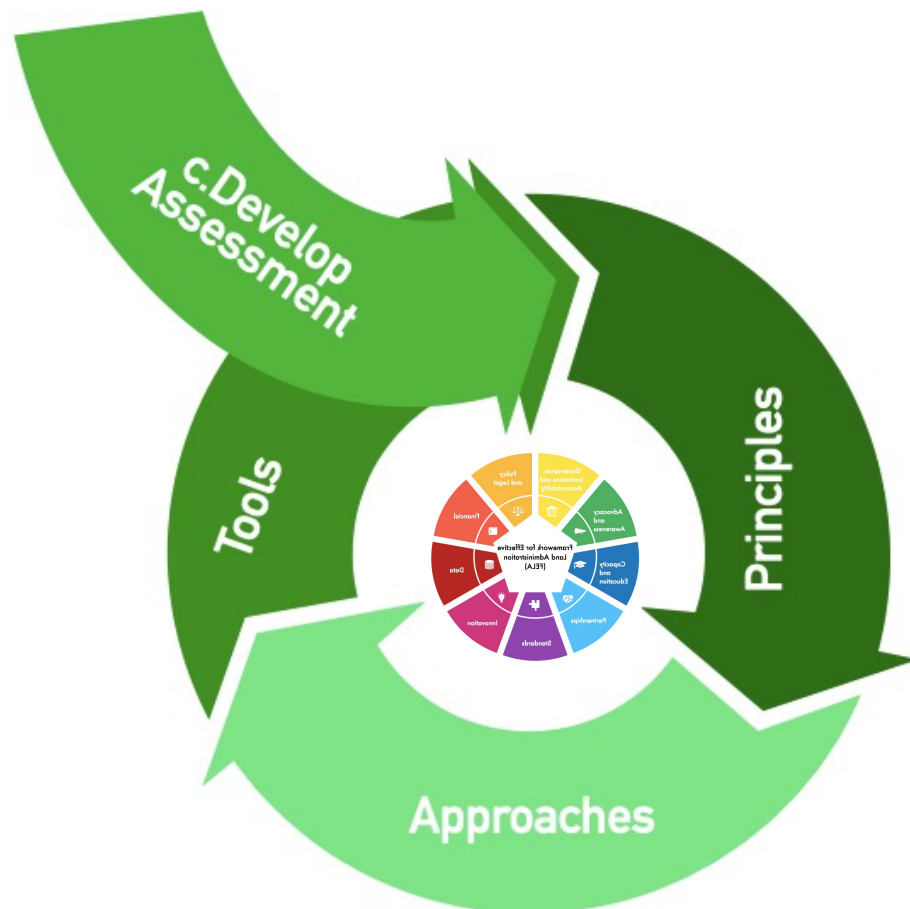
- Develop handbooks and checklists based on in-country experiences



Source: Unger et al. (2022)

https://www.fig.net/resources/proceedings/fig_proceedings/fig2022/ppt/ts02a/TS02A_unger_crompvoets_et_al_11446_ppt.pdf

Implementing the Framework for Effective Land Administration



Source: Unger et al. (2022)
https://www.fig.net/resources/proceedings/fig_proceedings/fig2022/ppt/ts02a/TS02A_unger_crompvoets_et_al_11446_ppt.pdf

Principles

- Elaborate guiding principles relevant to national circumstances

** No intention to measure and rank one over another*

Approaches

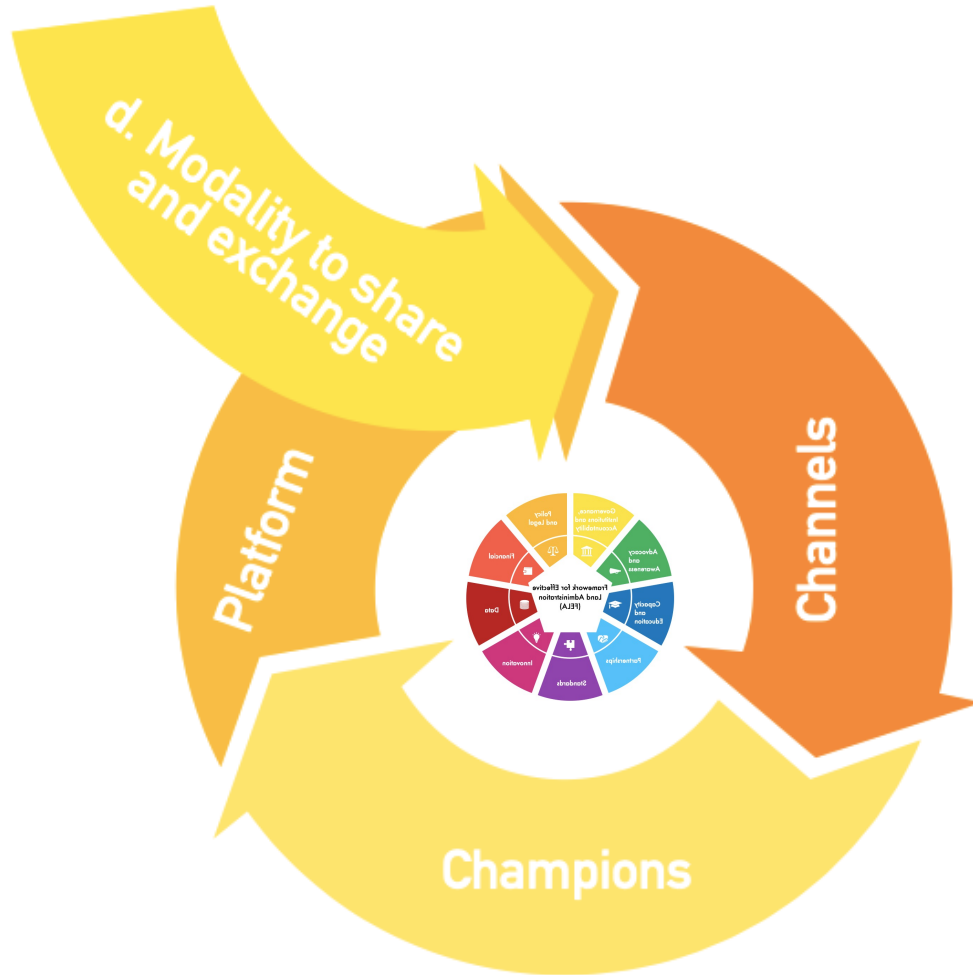
- 'No one size fits all'
- A suite of approaches that can be tailored to national circumstances for implementation
- Guidance to evaluate options according to country context

Tools

- Develop 'light weight' resource materials, references or tools – keeping in mind country context



Implementing the Framework for Effective Land Administration



Channels

- Identify available and required channels
- Formal and Informal
- Strategic messages and value propositions

Champions

- Identify national and local champions
- Ensure those champions share and exchange experiences and lessons learnt

Platform

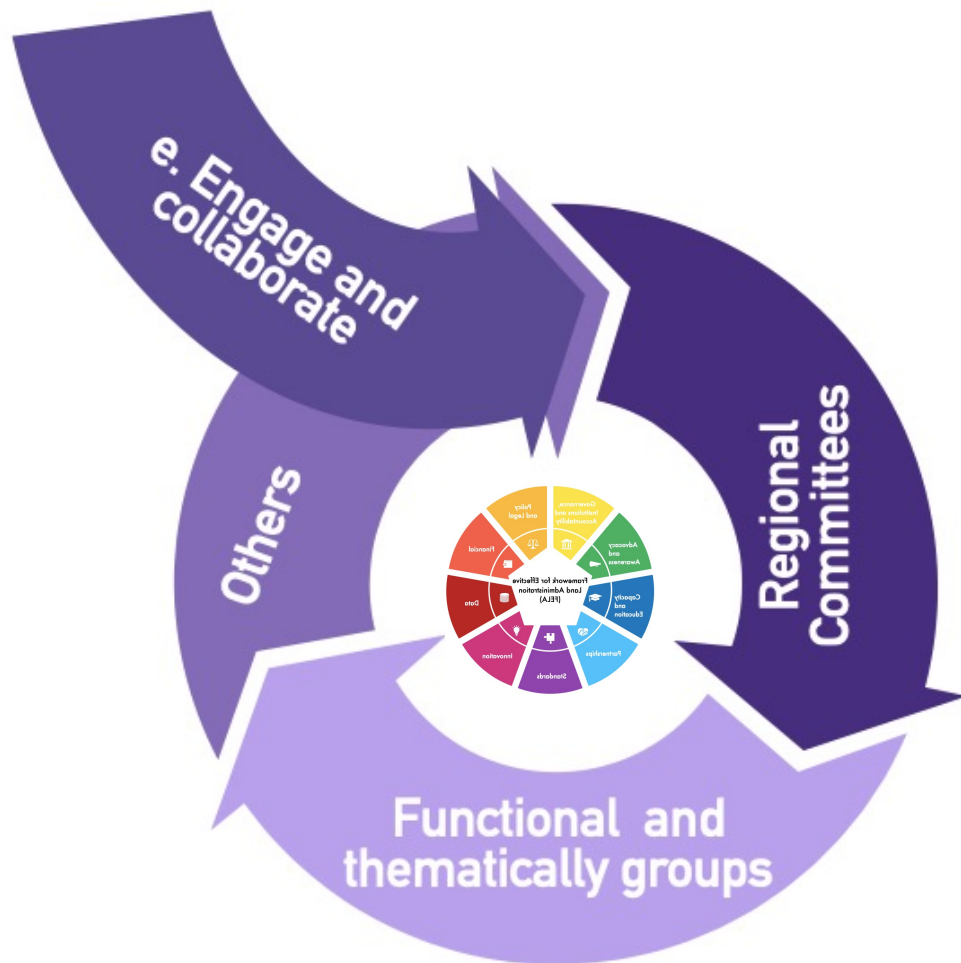
- Use mechanisms/platforms which are affordable and inclusive



Source: Unger et al. (2022)

https://www.fig.net/resources/proceedings/fig_proceedings/fig2022/ppt/ts02a/TS02A_unger_crompvoets_et_al_11446_ppt.pdf

Implementing the Framework for Effective Land Administration



Regional Committees

- WG of Regional Committees
- Regional training and research institutes

Functional and thematic groups

- Standards development organizations

Others

- Civil society
- International and Regional Development organizations (donors)
- Philanthropic entities



Source: Unger et al. (2022)

https://www.fig.net/resources/proceedings/fig_proceedings/fig2022/ppt/ts02a/TS02A_unger_crompvoets_et_al_11446_ppt.pdf

Implementing the Framework for Effective Land Administration

EuroSDR with the support of UN-GGIM Europe and the UN-GGIM EG-LAM, initiated a small project in summer 2021 to raise awareness of the merits and benefits of effective land administration and to share knowledge and experience leveraging the FELA as overarching policy guidance



- Joep Cromptvoets, KU Leuven, Belgium
- Anka Lisec, University of Ljubljana, Slovenia
- Frédéric Cantat, IGN, France



- Eva-Maria Morscher- Unger, Kadaster, the Netherlands
- Rohan Bennett, Kadaster, the Netherlands





The Framework for Effective Land Administration

Sustainable development demands effective land administration

Possible Impact of such initiatives

- Provide evidence-based insights to the GGIM CoE on emerging trends, successful practices and existing gaps in LA
- UN Member States initiate/guide future of FELA through request—statements to the EG-LAM during High Level?
- EuroSDR/Eurogeographics etc. to take a more prominent role (through the MS) to guide these developments?
- Implementation of FELA for Europe with input from this survey?
- Generate actionable knowledge to support and influence the post 2030 Agenda
- ...